



SD card slot



Desktop & wallmount



Indoor & outdoor temp.



Air & cabinet temp.

Desktop Temp./Humidity Monitor with SD Card Logging 87798/87799

- Simultaneously display/record Temp. and Humidity
- Advanced SD card design for continuous recording
- Check vapor condensation risk through DP temperature
- Long battery life (via alkaline battery)
 - no logging: one year -logging: one month (rate:1min, 1G SD card)
- LED/Audible alarm threshold of each parameters are programmable
- 87798:Dew point monitor 87799:External T monitor



Metric/Imperial



Time Stamp



Low Battery



MAX/MIN



Auto Logging



TXT



DC jack



SD card



LED Alarm



Buzzer Alarm

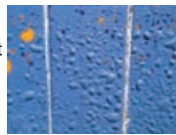
Model	87798	87799
Temp. range	-10.0~70.0°C	
Temp. resolution	0.1°C/°F	
Temp. accuracy	+/-1°C	
Humidity. range	0%~99.9%RH	
Humidity resolution	0.1%RH	
Humidity accuracy	+/-3%RH (at 25°C, 10~90%RH, others +/-5%RH)	
Dew point temp. Range	-20~70°C	N/A
External temp. Range	N/A	-10~70°C (Display: -30~70°C)
External temp. resolution	N/A	0.1°C/°F
External temp. accuracy	N/A	+/-0.6°C (0~50°C), +/-1.2°C(-10~0°C, 50~70°C) No specified for -30°C~-10°C
External probe size	N/A	Dia.4mm x Length:25mm
External probe cable	N/A	2M long, material: PVC
SD card	SD card or SDHC card (MMC and SDXC cards are not compatible)	
Sampling rate	1 to 720 mins. Default: 10 mins	
Beeper (dB)	~65dB	
RH% Self calibration	YES, via salt chamber	
Power consumption	<0.4mA	
LCD size (mm)	63(H)x70(W)	
Operation temp.	0~50°C	
Operation RH%	Humidity < 90%	
Storage temp.	-10~50°C	
Storage RH%	Humidity < 90%	
Dimension(mm)	110x91x30(H)	
Weight	~200g	
Power	AA x3pcs or 5V adaptor	
Standard Package	Meter/adaptor/Manual/Paper box/SD card	

What is Dew Point (DP)?

The dew point temperature is the temperature at which the air can't hold all of its water vapor and some of the water vapor must condense into liquid water. Condensation of water vapour begins when the temperature of air is lowered to its dew point and beyond.

What is the application of Dew Point?

- In summer or high humidity season, identifies and warns when conditions for mold growth exist
- In winter or low humidity season, identifies and warns when conditions for static electricity exist
- Air temperature and dew point temp. indicate where condensation may occur
- Monitor conditions in laboratories, basement and other controlled environment settings



Ordering Code

VZ87797AZ, 87798 logger

VZ87799AZ, 87799 logger